



Who We Are

An inquiry into the nature of self; beliefs and values; personal, physical, mental, social and spiritual health; **human relationships including families, friends, communities, and cultures**; rights and responsibilities; what it means to be human.

Aug. 9th - Oct. 7th
7 weeks



Where We Are in Place and Time

An inquiry into orientation in place and time; personal histories; homes and journeys; the discoveries, explorations, and migrations of humankind; the relationships between and the interconnectedness of individuals and civilizations, from local and global perspectives.



How We Express Ourselves

An inquiry into the ways in which we discover and express ideas, feelings, nature, culture, beliefs and values; the ways in which we reflect on, extend and enjoy our creativity; our appreciation of the aesthetic.

Oct. 7th - Dec. 6th
8 weeks



How the World Works

An inquiry into the natural world and its laws; the interaction between the natural world (physical and biological) and human societies; how humans use their understanding of scientific principles; the impact of scientific and technological advances on society and on the environment.

Mar. 17th - May 21th
13 weeks



How We Organize Ourselves

An inquiry into the interconnectedness of human-made systems and communities; the structure and function of organizations; societal decision-making; economic activities and their impact on humankind and the environment.



Sharing the Planet

An inquiry into rights and responsibilities in the struggle to share finite resources with other people and with other living things; **communities** and the relationships within and between them; access to equal opportunities; peace and conflict resolution.

Dec. 9th - Feb. 14th
9 Weeks

<p>Phase A: Central Idea: Our actions can affect our community.</p> <p>How do our actions _____ our community?</p>		<p>Phase A: Central Idea: All living things grow and change.</p> <p>How do things _____?</p>	<p>Phase A: Central Idea: Patterns change our world.</p> <p>How do patterns affect the world?</p>		<p>Phase A: Central Idea: Caring for other living things besides ourselves on our planet.</p> <p>How do we care for _____?</p>
<p>An Inquiry into:</p> <ul style="list-style-type: none"> Connections between home, school, and community - responsibility, change Understanding responsibilities through actions - change, causation Systems and structure are in place for safety at home, school, and community - function, connection 		<p>An Inquiry into:</p> <ul style="list-style-type: none"> Why things change over time and their impact - change, causation How things change over time and their impact - change, connection Scientific cycles of how things work - function, causation 	<p>An Inquiry into:</p> <ul style="list-style-type: none"> Weather affects living things - form, change Noticable differences between seasons - systems, causation 		<p>An inquiry into:</p> <ul style="list-style-type: none"> What are animals/insects and how do we respect their environment or habitat - connection, causation The needs of animals in our environment and how can we provide - responsibility, function Appropriate interaction with animals - system
<p>Key & Related Concepts: Responsibility: Rights, values Causation: Impact, Consequences</p> <p>Learner Profile: Open minded Principled</p> <p>Approaches to Learning: Communication Skills Research Skills Social Skills</p>		<p>Key & Related Concepts Connection: relationships, systems Change: cycles, transformations</p> <p>Learner Profile: Caring Communicators</p> <p>Approaches to Learning: Communication Skills Thinking skills</p>	<p>Key & Related Concepts Form: patterns Change: weather</p> <p>Learner Profile: Reflective Balanced</p> <p>Approaches to Learning: Communication Skills Research Skills</p>		<p>Key & Related Concepts Function: role, systems Responsibility: values, initiative</p> <p>Learner Profile: Knowledgeable Inquirer</p> <p>Approaches to Learning: Thinking Skills Self-Management Skills</p>



Who We Are

An inquiry into the nature of self; beliefs and values; personal, physical, mental, social, and spiritual health; **human relationships including families, friends, communities, and cultures**; rights and responsibilities; what it means to be human.

Oct. 3th - Nov. 15th
6 weeks



Where We Are in Place and Time

An inquiry into orientation in place and time; personal histories; homes and journeys; the discoveries, explorations, and migrations of humankind; and the relationships between and the interconnectedness of individuals and civilizations, from local and global perspectives.



How We Express Ourselves

An inquiry into the ways in which we discover and express ideas, feelings, nature, culture, beliefs, and values; the ways in which we reflect on, extend, and enjoy our creativity; **our appreciation of the aesthetic.**

Nov. 18th - Jan. 31th
8 weeks



How the World Works

An inquiry into the natural world and its laws; **the interaction between the natural world (physical and biological) and human societies**; how humans use their understanding of scientific principles; the impact of scientific and technological advances on society and on the environment.

Mar. 31st - May 22th
8.5 weeks



How We Organize Ourselves

An inquiry into the interconnectedness of human-made systems and communities; the structure and function of organizations; societal decision-making; economic activities and their impact on humankind and the environment.

Aug. 7th - Oct. 2nd
8 weeks



Sharing the Planet

An inquiry into rights and responsibilities in the struggle to share finite resources with other people and with other living things; communities and the relationships within and between them; access to equal opportunities; peace and conflict resolution.

Feb. 3rd - Mar. 21st
7 weeks

Phase A: Central Idea: Cooperation helps families develop their community. How does cooperation help ____?		Phase A: Central Idea: People use ideas to express themselves. How do people use ideas to express themselves through ____?	Central Idea: Changes impact living things How do changes impact ____?	Phase A: Central Idea: Systems help communities organize themselves How do systems in ____ help people?	Central Idea: Sharing resources affects living things. How does sharing resources affect ____?
An Inquiry into: <ul style="list-style-type: none"> What makes me who I am - form, connection Who is in my family and how do we work together - form, connection How there are all kinds of families - form, connection 		An Inquiry into: <ul style="list-style-type: none"> How my five senses help me explore the world - function, causation How I use my imagination - perspective, function The way we use different materials to create and build - function, perspective Enjoying art that other people create - perspective, function 	An Inquiry into: <ul style="list-style-type: none"> How plants and animals change and why - function, causation How living things change during the day and at night - function, causation How the weather affects living things - function, causation 	An Inquiry into: <ul style="list-style-type: none"> Systems we create to organize ourselves - responsibility, form How having an organized environment helps living things - function, connection How communities are the same/different - form, responsibility 	An Inquiry into: <ul style="list-style-type: none"> How living things use resources - function, responsibility Sharing resources with other living things - responsibility, connection, change How I can help the Earth - responsibility, change
Key & Related Concepts: Connection: Relationships Form: Community Learner Profile: Caring - Cooperation Knowledgeable - Enthusiasm Approaches to Learning: Social Skills Self-Management Skills		Key & Related Concepts Perspective: Opinion Function: Communication Learner Profile: Open-Minded - Creativity, Appreciation Thinkers - Independence Approaches to Learning: Thinking Skills Social Skills	Key & Related Concepts Causation: Patterns Function: Impact Learner Profile: Inquirer - Curiosity Courageous - Confidence Approach to Learning: Thinking Skills	Key & Related Concepts: Responsibility: Citizenship Form: Similarities and Differences Learner Profile: Principled - Commitment Balanced - Respect Approaches to Learning: Self-Management Skills Communication Skills	Key & Related Concepts: Responsibility: Initiative Change: Transformation Learner Profile: Reflective - Empathy Communicator - Integrity Approach to Learning: Research Skills



Who We Are

An inquiry into the nature of self; beliefs and values; personal, physical, mental, social and spiritual health; **human relationships** including families, friends, communities, and **cultures**; rights and responsibilities; what it means to be human.

Oct. 7th - Nov. 15th
6 weeks



Where We Are in Place and Time

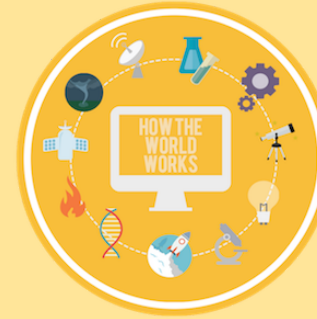
An inquiry into orientation in place and time; personal histories; homes and journeys; the discoveries, explorations and migrations of humankind; the relationships between and the interconnectedness of individuals and civilizations, from local and global perspectives.



How We Express Ourselves

An inquiry into the ways in which we discover and express ideas, feelings, nature, culture, beliefs and values; **the ways in which we reflect on, extend and enjoy our creativity**; our appreciation of the aesthetic.

Aug. 7th - May 22th
42 weeks (Yearlong)



How the World Works

An inquiry into the natural world and its laws; **the interaction between the natural world (physical and biological) and human societies**; how humans use their understanding of scientific principles; the impact of scientific and technological advances on society and on the environment.

Feb. 3rd - Mar. 21st
7 weeks



How We Organize Ourselves

An inquiry into the interconnectedness of human made systems and communities; the structure and function of organizations; **societal decision making**; economic activities and their impact on humankind and the environment.

Aug. 7th - Oct. 4th
8.5 weeks



Sharing the Planet

An inquiry into rights and responsibilities in the struggle to share finite resources with other people and with other living things; **communities and the relationships within and between them**; access to equal opportunities; peace and conflict resolution.

Mar. 31th - May 22th
7 weeks

Central Idea: Exploring relationships changes our perspective. How does exploring ____ change our perspective?		Central Idea: Ideas are expressed through celebration. How are ideas expressed through ____?	Central Idea: Forces impact our world. How do forces impact ____?	Central Idea: Communities develop procedures to create order. How do communities develop procedures to create order in ____?	Central Idea: Patterns affect our environment. How do patterns in ____ affect our environment?
An Inquiry into: <ul style="list-style-type: none"> What makes you who you are - form How our school community meets its needs - perspective Communities now and long ago- form, change 		An Inquiry into: <ul style="list-style-type: none"> Celebrations - form, connection How legends and stories connect to traditions and celebrations - form, connection National symbols (US, global)- form, connection 	An Inquiry into: <ul style="list-style-type: none"> Forces and motion- causation, connection Weather - causation, connection How the sun and Earth are connected - connection, causation 	An Inquiry into: <ul style="list-style-type: none"> The way people treat each other affects the community- causation How essential agreements and routines establish a community- responsibility Understanding that all actions have consequences.- responsibility, causation 	An Inquiry into: <ul style="list-style-type: none"> Plants and animals - form, function How plants and animals change their environment- change, function How people change their environment- change, function
Key & Related Concepts: Perspective: Beliefs Form: Structure Learner Profile: Inquirer - Curiosity Thinker- Empathy Approaches to Learning: Thinking Skills Research Skills		Key & Related Concepts: Connection: Relationships Form: Similarities and Differences Learner Profile: Open-Minded - Appreciation Reflective - Independence Approaches to Learning: Communication skills Thinking Skills	Key & Related Concepts: Causation: Impact Connection: Interaction Learner Profile: Communicator - Confidence Knowledgeable - Enthusiasm Approaches to Learning: Research Skills Communication Skills	Key & Related Concepts: Responsibility: Citizenship Causation: Consequences Learner Profile: Principled - Respect Risk-Taker - Creativity Approaches to Learning: Self-Management Skills Social Skills	Key & Related Concepts: Change: Transformation, Adaptation Function: Patterns Learner Profile: Balanced - Commitment Caring - Cooperation, Integrity Approaches to Learning: Social Skills Self-Management Skills



Who We Are

An inquiry into the nature of self; beliefs and values; personal, physical, mental, social and spiritual health; human relationships including families, friends, communities, and cultures; rights and responsibilities; what it means to be human.

Oct. 31st - Dec. 22nd
7 weeks



Where We Are in Place and Time

An inquiry into orientation in place and time; **personal histories**; homes and journeys; the discoveries, explorations and migrations of humankind; the relationships between and the interconnectedness of individuals and civilizations, from local and global perspectives.

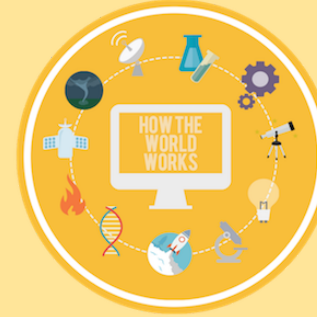
Jan. 9th - Feb. 17th
6 weeks



How We Express Ourselves

An inquiry into the ways in which we discover and express ideas, feelings, nature, culture, beliefs and values; the ways in which we reflect on, extend and enjoy our creativity; our appreciation of the aesthetic.

April 10th - May 25th
7 weeks



How the World Works

An inquiry into the natural world and its laws; the interaction between the natural world (physical and biological) and human societies; **how humans use their understanding of scientific principles**; the impact of scientific and technological advances on society and on the environment.

Sept. 19th - Oct. 28th
6 weeks



How We Organize Ourselves

An inquiry into the interconnectedness of human made systems and communities; **the structure and function of organizations**; societal decision making; economic activities and their impact on humankind and the environment.

Aug. 10th - Sept. 16th
5.5 weeks



Sharing the Planet

An inquiry into rights and responsibilities in the struggle to share finite resources with other people and with other living things; **communities and the relationships within and between them**; access to equal opportunities; peace and conflict resolution.

Feb. 21st - April 7th
6 weeks

<p>Central Idea: Culture connects us to self and others.</p> <p>How does culture connect us to _____?</p>	<p>Central Idea: People create change in society.</p> <p>How does _____ create change?</p>	<p>Central Idea: Ideas, emotions and values impact art.</p> <p>How do ideas, emotions and values impact _____?</p>	<p>Central Idea: Patterns allow for predictions.</p> <p>How do patterns in _____ allow for predictions?</p>	<p>Central Idea: Systems create structure.</p> <p>How do systems create structure in _____?</p>	<p>Central Idea: Cycles impact organisms.</p> <p>How do cycles impact _____?</p>
<p>An Inquiry into:</p> <ul style="list-style-type: none"> What makes each continent unique - form, connection Similarities and differences of people from different continents- connection, form Where we live affects who we are - connection, causation 	<p>An Inquiry into:</p> <ul style="list-style-type: none"> How people past and present create change - change, connection How change impacts our lives - change, causation How our actions change the present and future- change, responsibility 	<p>An Inquiry into:</p> <ul style="list-style-type: none"> The emotions we experience - form, perspective How artists express ideas and emotions through their artwork - form, perspective How artists find inspiration - form, perspective 	<p>An Inquiry into:</p> <ul style="list-style-type: none"> How the sun, moon, and stars have motion- change, causation Light - causation Seasonal patterns of sunrise and sunset- change, causation How seasons differ around the world - change, causation, connection 	<p>An Inquiry into:</p> <ul style="list-style-type: none"> Community members create essential agreements to create order - form, causation Community members have rights and responsibilities - form, responsibility How choices affect lives - form, responsibility, causation 	<p>An Inquiry into:</p> <ul style="list-style-type: none"> How all organisms have external parts that help them survive and grow - function, connection How animals and plants use their body external parts - function How offspring inherit traits from their parents- connection
<p>Key & Related Concepts: Connection: Relationships Form: Similarities and Differences</p> <p>Learner Profile: Open-Minded - Appreciation Communicator - Respect</p> <p>Approach to Learning: Communication skills</p>	<p>Key & Related Concepts: Change: Transformation Responsibility: Initiative</p> <p>Learner Profile: Risk-Taker - Confidence Principled - Integrity</p> <p>Approaches to Learning: Research Skills Social Skills</p>	<p>Key & Related Concepts: Perspective: Opinion Form: Structure, Similarities/Differences, Pattern</p> <p>Learner Profile: Communicator - Creativity Reflective - Enthusiasm</p> <p>Approaches to Learning: Communication Skills Research Skills</p>	<p>Key & Related Concepts: Causation: Sequences, Patterns Change: Transformation Connection: Systems</p> <p>Learner Profile: Inquirer - Curiosity Knowledgeable - Appreciation</p> <p>Approaches to Learning: Thinking Skills Self-Management Skills</p>	<p>Key & Related Concepts: Form: Structure Responsibility: Rights, Citizenship Causation: Consequences</p> <p>Learner Profile: Principled - Independence Caring - Cooperation</p> <p>Approaches to Learning: Social skills Self-Management Skills</p>	<p>Key & Related Concepts: Function: Systems, Behavior Connection: Relationships, Responsibility</p> <p>Learner Profile: Thinker - Empathy Balanced - Commitment</p> <p>Approaches to Learning: Research Skills Thinking Skills</p>



Who We Are

An inquiry into the nature of self; beliefs and values; personal, physical, mental, social and spiritual health; **human relationships including families, friends, communities, and cultures**; rights and responsibilities; what it means to be human.

Jan.22- Mar. 1
6 weeks



Where We Are in Place and Time

An inquiry into orientation in place and time; **personal histories**; homes and journeys; the discoveries, explorations and migrations of humankind; the relationships between and the interconnectedness of individuals and civilizations, from local and global perspectives.

Aug. 9th - Sept. 15
6 weeks



How We Express Ourselves

An inquiry into the ways in which we discover and express ideas, feelings, nature, culture, beliefs and values; **the ways in which we reflect on, extend and enjoy our creativity**; our appreciation of the aesthetic.

April 22- May 23
5.5 weeks



How the World Works

An inquiry into the natural world and its laws; **the interaction between the natural world (physical and biological) and human societies**; how humans use their understanding of scientific principles; the impact of scientific and technological advances on society and on the environment.

Nov. 6- Jan. 19th
7 weeks



How We Organize Ourselves

An inquiry into the interconnectedness of human made systems and communities; the structure and function of organizations; **societal decision making**; economic activities and their impact on humankind and the environment.

March 4- April 19th
6 weeks



Sharing the Planet

An inquiry into rights and responsibilities in the struggle to share finite resources with other people and with other living things; **communities and the relationships within and between them**; access to equal opportunities; peace and conflict resolution.

Sept. 18- Nov 3th
7 weeks

<p>Central Idea: Communities support relationships.</p> <p>How do communities support relationships in ____?</p>	<p>Central Idea: Traditions are influenced by history.</p> <p>How is ____ influenced by history?</p>	<p>Central Idea: People express themselves through writing.</p> <p>How do people express themselves through ____?</p>	<p>Central Idea: Changes affect living things.</p> <p>How do changes affect ____?</p>	<p>Central Idea: People develop systems that impact others and their environment.</p> <p>How does ____ system impact ____?</p>	<p>Central Idea: Living things are connected.</p> <p>How is ____ connected to ____?</p>
<p>An Inquiry into:</p> <ul style="list-style-type: none"> The structure and properties of matter - form, function How land is used in communities - responsibility, function Agricultural systems and food production - responsibility, function 	<p>An Inquiry into:</p> <ul style="list-style-type: none"> Who our ancestors are - connection How family history links our lives to the past - connection, perspective How past events have shaped the present - connection, perspective 	<p>An Inquiry into:</p> <ul style="list-style-type: none"> How we communicate through writing - form, function How poets express themselves - form, function How composers and musicians express themselves - form, function 	<p>An Inquiry into:</p> <ul style="list-style-type: none"> Earth's landscapes and where they are found - form, connection The benefits and challenges of Earth's changing landscapes - change, perspective Solutions to prevent landscape changes - change, perspective 	<p>An Inquiry into:</p> <ul style="list-style-type: none"> Why we have government and how it works - causation How governments make and carry out laws - causation, change How groups and nations interact to resolve problems - causation, change 	<p>An Inquiry into:</p> <ul style="list-style-type: none"> The needs of plants and animals - connection, causation The diversity of living things in a variety of land habitats - connection, causation The diversity of living things in a variety of water habitats - connection, causation
<p>Key & Related Concepts: Responsibility: Initiative Function: Role, Systems</p> <p>Learner Profile: Principled - Cooperation Reflective - Respect</p> <p>Approaches to Learning: Social Skills Thinking Skills</p>	<p>Key & Related Concepts: Connection: Relationships Perspective: Beliefs</p> <p>Learner Profile: Open Minded - Appreciation, Caring - Empathy</p> <p>Approaches to Learning: Communication Skills Self-Management Skills</p>	<p>Key & Related Concepts: Function: Communication Form: Pattern</p> <p>Learner Profile: Thinker - Creativity Communicator - Enthusiasm</p> <p>Approaches to Learning: Communication Skills Research Skills</p>	<p>Key & Related Concepts: Change: Transformation Perspective: Opinion</p> <p>Learner Profile: Balanced - Cooperation Knowledgeable - Independence</p> <p>Approaches to Learning: Self-Management Skills Communication Skills</p>	<p>Key & Related Concepts: Causation: Impact, Consequences Change: Growth</p> <p>Learner Profile: Open-Minded - Integrity Courageous - Confidence</p> <p>Approaches to Learning: Thinking Skills Social Skills</p>	<p>Key & Related Concepts: Connection: Interdependence Causation: Impact</p> <p>Learner Profile: Knowledgeable - Commitment Inquirer - Curiosity</p> <p>Approaches to Learning: Research Skills Thinking Skills</p>



Who We Are

An inquiry into the nature of self; beliefs and values; personal, physical, mental, social and spiritual health; human relationships including families, friends, communities, and cultures; rights and responsibilities; what it means to be human.

Jan. 22nd - March 1st
6 weeks



Where We Are in Place and Time

An inquiry into orientation in place and time; personal histories; homes and journeys; the discoveries, explorations and migrations of humankind; the relationships between and the interconnectedness of individuals and civilizations, from local and global perspectives.

Sept. 25th - Nov. 3rd
6 weeks



How We Express Ourselves

An inquiry into the ways in which we discover and express ideas, feelings, nature, culture, beliefs and values; the ways in which we reflect on, extend and enjoy our creativity; our appreciation of the aesthetic.

Mar. 4th - April 12th
5 weeks



How the World Works

An inquiry into the natural world and its laws; the interaction between the natural world (physical and biological) and human societies; how humans use their understanding of scientific principles; the impact of scientific and technological advances on society and on the environment.

Apr. 15th - May 23rd
6 weeks



How We Organize Ourselves

An inquiry into the interconnectedness of human made systems and communities; the structure and function of organizations; societal decision making; economic activities and their impact on humankind and the environment.

Aug. 9th - Sept. 22nd
6.5 weeks



Sharing the Planet

An inquiry into rights and responsibilities in the struggle to share finite resources with other people and with other living things; communities and the relationships within and between them; access to equal opportunities; peace and conflict resolution.

Nov. 6th - Jan. 19th
8 weeks

Central Idea: Culture shapes communities. How does culture shape _____?	Central Idea: Life is influenced by place and time. How is _____influenced by place and time?	Central Idea: Beliefs and ideas are expressed through the arts. How are beliefs and ideas expressed through _____?	Central Idea: Natural laws impact life. How do natural laws impact _____?	Central Idea: Communities create laws and organizational systems. How do laws and organizational systems affect _____?	Central Idea: Cycles and traits affect organisms How do cycles and traits affect _____?
An Inquiry into: <ul style="list-style-type: none"> How beliefs and customs have shaped the lifestyles of Native Americans - perspective, change, connection The impact of cultural traditions that immigrants bring with them - causation, change, connection How beliefs and customs shape the lifestyles of people today - perspective, change, connection 	An Inquiry into: <ul style="list-style-type: none"> How regions, weather, and climate are interconnected - connection Weather-related natural disasters and hazards - causation How geography, time, and climate affect where and how people live - causation, connection 	An Inquiry into: <ul style="list-style-type: none"> The different artistic mediums that people use to express their ideas and beliefs - form, function, causation The way our feelings and beliefs are reflected in our creativity - connection, causation Developing an appreciation and respect for diverse cultural expression - causation, form 	An Inquiry into: <ul style="list-style-type: none"> Patterns of motion - form, causation How forces impact motion - function, causation The interaction between electric forces - function, causation The interaction between magnetic forces - function, causation 	An Inquiry into: <ul style="list-style-type: none"> The role of rules and laws in our daily lives - function, responsibility The structure of government (local) - form, function, responsibility Our roles and responsibilities as global citizens - responsibility, function 	An Inquiry into: <ul style="list-style-type: none"> The diverse life cycles of organisms - form, change How traits are influenced - causation, change How organisms survive and adapt to environments - form, change How changes in the environment affect organisms- change, causation, responsibility.
Key & Related Concepts: Perspective: Beliefs, Opinions Change: Adaptation Learner Profile: Open-Minded - Empathy Balanced - Respect Approaches to Learning: Research Skills Communication Skills	Key & Related Concepts: Causation: Impact Connection: Systems Learner Profile: Inquirer - Cooperation Knowledgeable - Commitment Approaches to Learning: Research Skills Self-Management Skills	Key & Related Concepts: Form: Structure, Pattern Perspective: Subjectivity, Prejudice Learner Profile: Caring - Appreciation Communicator - Creativity Approaches to Learning: Communication Skills Self-Management Skills	Key & Related Concepts: Causation: Impact Function: Behavior, Patterns Learner Profile: Risk-Taker - Confidence Open-Minded - Curiosity Approaches to Learning: Communication Skills Thinking Skills	Key & Related Concepts: Function: Systems Responsibility: Initiative Learner Profile: Principled - Independence, Integrity Balanced - Commitment Approaches to Learning: Self-Management Skills Social Skills	Key & Related Concepts: Change: Cycles, Sequences Form: Similarities, Differences Learner Profile: Thinker - Curiosity Reflective - Enthusiasm Approaches to Learning: Thinking Skills Social Skills



Who We Are

An inquiry into the nature of self; beliefs and values; personal, physical, mental, social and spiritual health; **human relationships including families, friends, communities, and cultures**; rights and responsibilities; what it means to be human.

Aug. 9 - Sept. 29



Where We Are in Place and Time

An inquiry into orientation in place and time; personal histories; homes and journeys; **the discoveries, explorations and migrations of humankind**; the relationships between and the interconnectedness of individuals and civilizations, from local and global perspectives.

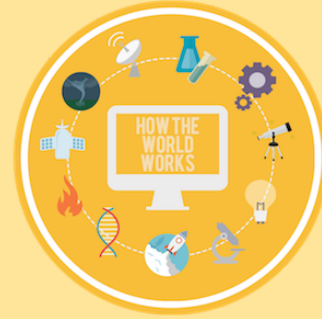
Nov. 27 - Jan. 26



How We Express Ourselves

An inquiry into the ways in which we discover and express ideas, feelings, nature, culture, beliefs and values; **the ways in which we reflect on, extend and enjoy our creativity**; our appreciation of the aesthetic.

April 1 - Apr. 26



How the World Works

An inquiry into the natural world and its laws; the interaction between the natural world (physical and biological) and human societies; how humans use their understanding of scientific principles; **the impact of scientific and technological advances on society and on the environment**.

Jan. 29 - Mar. 22



How We Organize Ourselves

An inquiry into the interconnectedness of human made systems and communities; the structure and function of organizations; societal decision making; economic activities and their impact on humankind and the environment.

April 29- May 23



Sharing the Planet

An inquiry into rights and responsibilities in the struggle to share finite resources with other people and with other living things; communities and the relationships within and between them; access to equal opportunities; peace and conflict resolution.

Oct 2 - Nov. 17

Central Idea: Relationships transform structures How do relationships in _____ transform structures in _____?	Central Idea: Movement initiates change. How does movement initiate change in _____?	Central Idea: Appreciation of culture is expressed through art. How is _____ expressed through art?	Central Idea: Systems affect the world In what ways do systems affect _____?	Central Idea: Government impacts systems. How does government impact _____?	Central Idea: Communities are dependent on resources. How is _____ dependent on resources?
An Inquiry into: <ul style="list-style-type: none"> Early California - form, change European impact on California- change, causation Regional and global relationships impact other cultures -causation, change 	An Inquiry into: <ul style="list-style-type: none"> Migration and immigration- causation, change The Gold Rush and its impact- causation California's industry and advancements- change causation 	An Inquiry into: <ul style="list-style-type: none"> Expressions and appreciation of art forms- form, perspective Perspectives of art- perspective, connection Regional and global art- connection 	An Inquiry into: <ul style="list-style-type: none"> Forms of energy- form, function Energy transfer - form, function form, function Innovations impact systems (form, function, change) 	An Inquiry into: <ul style="list-style-type: none"> State government- form, function The impact of state systems (educational, legal...)- connection, responsibility California's global impact- connection, responsibility 	An inquiry into: <ul style="list-style-type: none"> Renewable and nonrenewable resources- change, causation, responsibility Rock formations/fossils and how they impact changes in our Earth- form, causation, change Physical changes in the Earth and our response to them- change, responsibility
Key & Related Concepts: Causation: Impact Change: Transformation Learner Profile: Risk Taker- Confidence Knowledgeable- Empathy Approaches to Learning: Research Skills Communication Skills	Key & Related Concepts: Causation: Consequences Change: Transformation Learner Profile: <ul style="list-style-type: none"> Knowledgeable - cooperation Caring - integrity Approach to Learning: Thinking Skills Social skills	Key & Related Concepts: Perspective: Subjective Connection: Voice Learner Profile: Reflective- Appreciation Open-Minded- Creativity Approach to Learning: Communication Skills	Key & Related Concepts: Function: Systems Form: Patterns Learner Profile: Thinker- Curiosity Balanced- Enthusiasm Approach to Learning: Research Skills Social Skills	Key & Related Concepts: Connection: Networks Responsibility: Values, Justice Learner Profile: Balanced- Commitment Communicator- Respect Approach to Learning: Social Skills	Key Concepts: Change: Adaptation, Transformation Causation: Impact, Pattern Learner profile: Caring- Respect Principled- Cooperation Approach to Learning: Self-Management Skills

 <div>Who We Are An inquiry into the nature of self; beliefs and values; personal, physical, mental, social and spiritual health; human relationships including families, friends, communities, and cultures; rights and responsibilities; what it means to be human. Jan. 6th - Feb. 14th 6 weeks</div>	 <div>Where We Are in Place and Time An inquiry into orientation in place and time; personal histories; homes and journeys; the discoveries, explorations and migrations of humankind; the relationships between and the interconnectedness of individuals and civilizations, from local and global perspectives. Sept. 23rd - Nov. 1st 6 weeks</div>	 <div>How We Express Ourselves An inquiry into the ways in which we discover and express ideas, feelings, nature, culture, beliefs and values; the ways in which we reflect on, extend and enjoy our creativity; our appreciation of the aesthetic. Apr. 14th - May 21st 6 weeks</div>	 <div>How the World Works An inquiry into the natural world and its laws; the interaction between the natural world (physical and biological) and human societies; how humans use their understanding of scientific principles; the impact of scientific and technological advances on society and on the environment. Aug. 7th - Sep. 20th 6.5 weeks</div>	 <div>How We Organize Ourselves An inquiry into the interconnectedness of human made systems and communities; the structure and function of organizations; societal decision making; economic activities and their impact on humankind and the environment. Feb. 18th - Apr. 11th 7 weeks</div>	 <div>Sharing the Planet An inquiry into rights and responsibilities in the struggle to share finite resources with other people and with other living things; communities and the relationships within and between them; access to equal opportunities; peace and conflict resolution. Nov. 4th - Dec. 19th 6 weeks</div>
--	--	--	--	--	---

Central Idea: Humans define themselves through experiences and relationships. How is _____ defined through experiences and relationships?	Central Idea: Discovery leads to transformation. How does discovery lead to transformation in _____?	Central Idea: Beliefs are expressed through culture. How are beliefs and culture expressed through ____?	Central Idea: Living and nonliving things are guided by rules and laws. How are things guided by rules and laws in _____?	Central Idea: Revolutions motivate change. How does revolution motivate change in _____?	Central Idea: Systems are affected by resources. How are systems in _____ affected by resources?
An Inquiry Into: <ul style="list-style-type: none">How experiences influence perspective - perspective, causationPatterns in relationships - connection, perspective, causationThe relationship between humans and Space- connection, causation	An Inquiry Into: <ul style="list-style-type: none">The lives of Native Americans - form, connectionThe motivations that lead people to explore - perspective, changeThe effect of exploration and colonization - change, connection	An Inquiry Into: <ul style="list-style-type: none">Migration - perspective, responsibilityManifest Destiny and its impact on communities - perspective, responsibilityHow humans express their beliefs - perspective, responsibility	An Inquiry Into: <ul style="list-style-type: none">Scientific technology and problem-solving - form, function, changeThe properties of matter - form, functionThe interdependent relationships in ecosystems - connection, function	An Inquiry Into: <ul style="list-style-type: none">The beliefs and values that caused the Revolutions- causation, change, perspectiveThe Declaration of Independence - perspective, functionThe development of the U.S. Constitution - causation, change	An Inquiry Into: <ul style="list-style-type: none">The roles of water in Earth's surface processes - function, connectionEarth materials and systems - form, connectionHuman impact on Earth systems - responsibility, connection

Key & Related Concepts Causation: Patterns Perspective: Beliefs Learner Profile: Open-Minded - Empathy Inquirer - Curiosity Approaches to Learning: Social Skills Self-Management Skills	Key & Related Concepts Change: Transformation Connection: Networks Learner Profile: Reflective - Respect Balanced - Appreciation Approaches to Learning: Communication Skills Social Skills	Key & Related Concepts Perspective: Opinions Responsibility: Justice Learner Profile: Communicator - Creative Courageous - Confidence Approaches to Learning: Social Skills Self-Management Skills	Key & Related Concepts Form: Properties Function: Patterns Learner Profile: Principled - Cooperation Thinker - Integrity Approaches to Learning: Thinking Skills Research Skills	Key & Related Concepts Change: Growth Causation: Impact Learner Profile: Thinker - Independence Knowledgeable - Enthusiasm Approaches to Learning: Communication Skills Thinking Skills	Key & Related Concepts Responsibility: Initiative Connection: Systems Learner Profile: Communicator - Respect Caring - Commitment Approaches to Learning: Self-Management Skills Research Skills
---	--	---	---	--	---

6th Grade Programme of Inquiry



Aug. 14th - Sept. 22nd
6 weeks



Sept. 25th - Nov. 3rd
6 weeks



Feb. 21st - Mar. 24th
5 weeks



Nov. 6th - Dec. 21st
6 weeks

How We Organize Ourselves

Feb. 20 - Mar. 22nd
5 weeks



Apr. 1 - May 22nd
7.5 weeks

Central Idea:
Humans impact systems
How do humans impact systems
in _____?

Central Idea:
Humans impact systems
How do humans impact systems
in _____?

An inquiry into: <ul style="list-style-type: none">health: physical, mental, emotional, spiritual- responsibility, causationthe commonalities and differences of cultures- connection, causationrelationships within and between global communities- responsibility, causation	An inquiry into: <ul style="list-style-type: none">the origins and systems of civilization- causation, formHow systems and structures in civilizations change- form, changeThe impact of civilizations on present-day societies- change, connection	An Inquiry into: <ul style="list-style-type: none">The various forms of artistic expression- form, perspectiveArtistic expression transforms over time - change, perspectiveThe interconnectedness of artistic expression- perspective, connectionStudent-driven and created	An Inquiry into: <ul style="list-style-type: none">Student-driven and created	An Inquiry into: <ul style="list-style-type: none">The emergence of new governmental systems - causation, connectionThe similarities and differences of governments - form, connectionImpact of early Western governments on modern societies- causation, connection	An Inquiry into: <ul style="list-style-type: none">Human impact on land, water, atmosphere, and climate - function, responsibilityThe equitability of global resources - function, responsibilityHuman solutions to mitigate environmental issues - function, responsibility
Key & Related Concepts: Responsibility - Relationships Causation - Impact Learner Profile/Attitude: Reflective, Respect Caring, Empathy Approaches to Learning: Self-Management Skills Social Skills	Key & Related Concepts: Change: Networks Form: Structure Learner Profile/Attitude: Communicator, Confidence Courageous, Independence Approaches to Learning: Thinking Skills Research Skills	Key & Related Concepts: Perspective: Subjectivity Change: Patterns Learner Profile/Attitude: Open-Minded: Appreciation Balanced: Creativity Approaches to Learning: Thinking Skills Social Skills	Key & Related Concepts: Function: Systems Responsibility: Structure Learner Profile/Attitude: Knowledgeable: Commitment Inquirer: Curiosity Approaches to Learning: Research Skills Self-Management Skills	Key & Related Concepts: Connection: Relationships Causation: Pattern Learner Profile: Balanced: Enthusiasm Thinker: Integrity Approaches to Learning: Research Skills Communication Skills	Key & Related Concepts: Function: Systems, Interdependence Responsibility: Rights, Initiative Learner Profile: Principled - Cooperation Courageous - Commitment Approaches to Learning: Self-Management Skills, Communication Skills